



56 UNDERDOWN ROAD BRIGHTON, BN42 4HL

£1,600 PCM

Delightful two bedroom family home in Southwick that has recently undergone extensive refurbishment. This superb period property has been re-decorated and re-carpeted throughout with bright and spacious rooms arranged over two floors comprising; bay fronted living room, dining room, modern kitchen, two double bedrooms and family bathroom suite. There is a delightful low maintenance rear garden and off road parking.

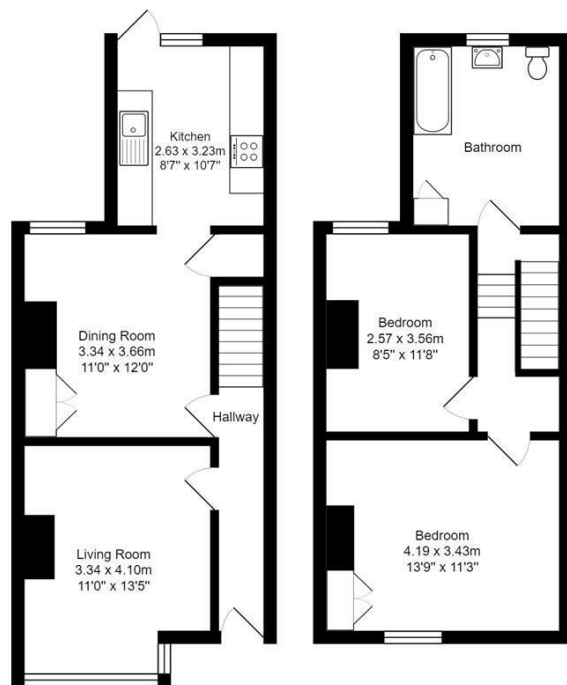
Quietly positioned on this popular no through road close to Southwick Green and local amenities including popular shops and schools. Southwick Station is easily accessible providing regular links to Brighton and London

**Nicholas
James**

SALES LETTINGS AUCTIONS







Underdown Road
Total Area: 83.0 m² ... 894 ft²

All measurements are approximate and for display purposes only.



Energy Efficiency Rating		
	Current	Potential
Very energy efficient - lower running costs		
(92 plus) A		89
(81-91) B		
(69-80) C		
(55-68) D	65	
(39-54) E		
(21-38) F		
(1-20) G		
Not energy efficient - higher running costs		
England & Wales	EU Directive 2002/91/EC	

Agents Note: Whilst every care has been taken to prepare these particulars, they are for guidance purposes only. All measurements are approximate and are for general guidance purposes only and whilst every care has been taken to ensure their accuracy, they should not be relied upon and potential buyers/tenants are advised to recheck the measurements

Hove Lettings
Ground Floor 8 The Drive
Hove
East Sussex
BN3 3JA

01273 917915
hello@nicholasjamesproperty.co.uk
www.nicholasjamesproperty.co.uk

**Nicholas
James**

SALES LETTINGS AUCTIONS